



**PLAN NOTES**

- SOLID HATCHED WALLS INDICATE NEW CONSTRUCTION. SEE PARTITION LEGEND FOR MORE INFORMATION.
- CONTRACTOR TO COORDINATE W/ NEW CONSTRUCTION DOCUMENTS FOR LOCATION OF ALL NEW PLUMBING, MECHANICAL, ELECTRICAL AND STRUCTURAL ITEMS W/ EXISTING CONDITIONS. NOTIFY ARCHITECT AND ENGINEER OF ANY DISCREPANCIES IN PLAN AND IN FIELD CONDITIONS.
- CONTRACTOR TO VERIFY ALL EXIST. CONDITIONS AND PATCH REPAIR ANY AND ALL ITEMS AS REQ'D TO MATCH EXIST. CONDITIONS.
- VERIFY ALL MATERIALS AND FINISHES W/ OWNER PRIOR TO SECURING AND CONSTRUCTION. SEE SHEET T.1 FOR FINISH INFORMATION.
- OWNER/ CONTRACTOR TO PROVIDE "MAXIMUM OCCUPANCY ALLOWED" SIGNAGE THROUGHOUT THE BUILDING. COORDINATE W/ CITY OFFICIALS FOR NUMBER AND LOCATION OF EACH SIGN.
- CONTRACTOR TO PROVIDE A TERMITE INSPECTION OF PROPERTY AND PROVIDE NECESSARY TERMITE TREATMENT AS REQUIRED.
- COORDINATE LOCATIONS OF PLYWOOD BACKING IN KITCHEN AREA WITH FOOD SERVICE DRAWINGS AND OWNER.
- SEE SHEET T.1 FOR KITCHEN EQUIPMENT & SEATING LAYOUT. ALL FURNITURE, KITCHEN EQUIPMENT, & T.V.'S BY OWNER.
- KITCHEN EQUIPMENT & T.V.'S TO BE OWNER-FURNISHED CONTRACTOR-INSTALLED.
- CONTRACTOR TO PROVIDE BLOCKING FOR T.V.'S. AS REQUIRED. VERIFY WITH OWNER FOR T.V. SIZES.

**PARTITION LEGEND**

**EXISTING DEMISING/HOUR SEPARATION WALL TO REMAIN**

**EXISTING CONCRETE BLOCK WALL TO REMAIN**

**INTERIOR PARTITION - ALL LOBBY HALLS**  
2x4 STUD FRAMING AT 16" O.C. MAX TO 48" A.F.F. - SEE DETAIL 10/51 FOR FINISH INFORMATION.

**TYPICAL INTERIOR PARTITION 3'**  
2x4 STUD FRAMING AT 16" O.C. MAX TO 4" ABOVE THE C.L.G. W/ 5/8" SIP. BD. SEE SHEETS S.1 & T.1 FOR WALL FINISH.

**EXTERIOR PARTITION 1'**  
NEW SYNTHETIC STONE VENEER ON ADHESIVE BOND COAT ON MORTAR ON EXISTING 8" CMU (SINGLE OR DOUBLE 8" CMU COURSE, SEE PLAN)

**PARTITION 1' IS EXISTING CONCRETE BLOCK WALL W/ 4" & 8" COURSE. WALL TO RECEIVE NEW SYNTHETIC STONE VENEER ON ADHESIVE BOND COAT ON MORTAR ON 4" CMU.**

**EXTERIOR PARTITION 2'**  
8" CONCRETE BLOCK - INFILL TO MATCH EXISTING CMU PARTITION T.1 TO HAVE NEW 2x6 12" LOG SIDING ON 8" CMU. SEE SIDING ATTACHMENT METHOD UNDER EXT. PARTITION 2' BELOW.

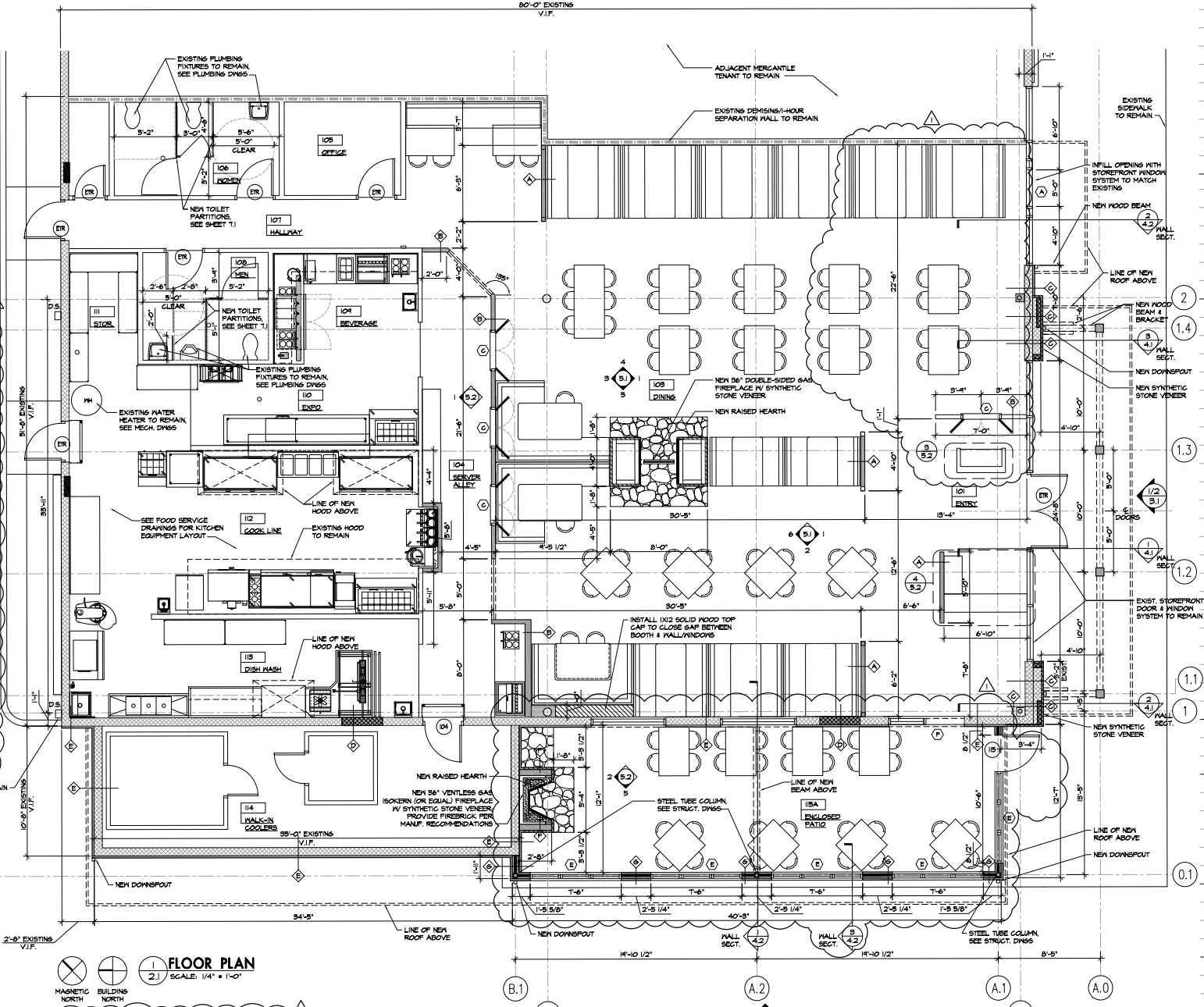
**EXTERIOR PARTITION 3'**  
NEW 2x6 12" LOG SIDING (BLND SCRIPED) ON BLDG WRAP ON EXT. PLYWOOD SHEATHING ON 2x6 STUD FRAMING AT 16" O.C. MAX. W/ R-4 BATT INSULATION.

**EXTERIOR FAUX CHIMNEY PARTITION 2'**  
NEW SYNTHETIC STONE VENEER ON MORTAR ON SCRATCH COAT ON METAL LATH ON BLDG WRAP ON EXTERIOR SHEATHING ON 2x6 STUD FRAMING AT 16" O.C. MAX.

**EXTERIOR ENCLOSED PATIO PARTITION 3'**  
NEW 2x6 12" LOG SIDING (BLND SCRIPED) ON BLDG WRAP ON EXT. PLYWOOD SHEATHING ON 2x6 STUD FRAMING AT 16" O.C. MAX. W/ R-4 BATT INSULATION.

**FIRE EXTINGUISHERS**  
PROVIDE NEW-RESEAL 5 LB. FIRE EXTINGUISHERS IN LOCATIONS SHOWN ON DRAWINGS. VERIFY EXACT NUMBER AND LOCATION OF EXTINGUISHERS WITH LOCAL JURISDICTION PRIOR TO AND DURING CONSTRUCTION.

- NOTES:**
- SEE ADDITIONAL NOTES REGARDING FRAMING ON STRUCT. DRAWINGS.
  - PROVIDE PRESSURE TREATED LUMBER AT ALL LOCATIONS WHERE WOOD CONSTRUCTION OR BLOCKING MEETS CONCRETE MASONRY UNITS.
  - SEE INTERIOR ELEVATIONS ON SHEET B.1 AND FINISH SCHEDULE ON SHEET T.1 FOR WALL FINISH INFORMATION.
  - REFER TO SELECTED STONE MANUFACTURER'S INSTALLATION SPECIFICATIONS.



**FLOOR PLAN**  
SCALE: 1/4" = 1'-0"

MAGNETIC NORTH BUILDING NORTH

EXTERIOR DIMENSIONS TAKEN FROM FACE OF CMU OR STUD, TYPICAL.