



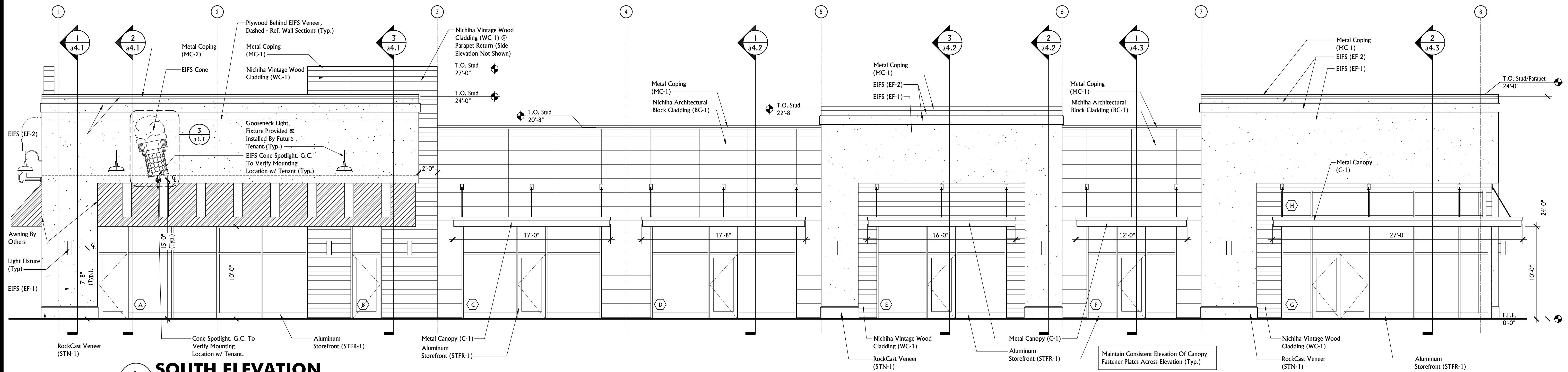
Date: February 6, 2018

File Name: Creswell Landing\_a3.1

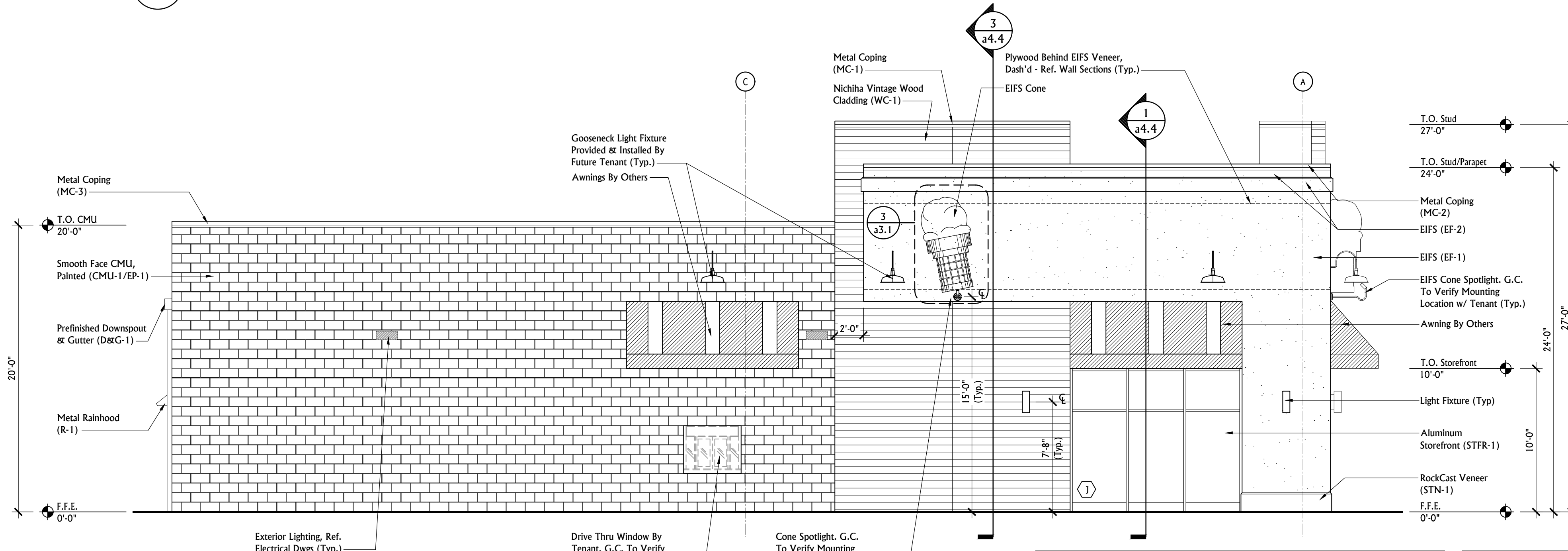
Project No: 2017-226

Drawing Title:  
Exterior Elevations

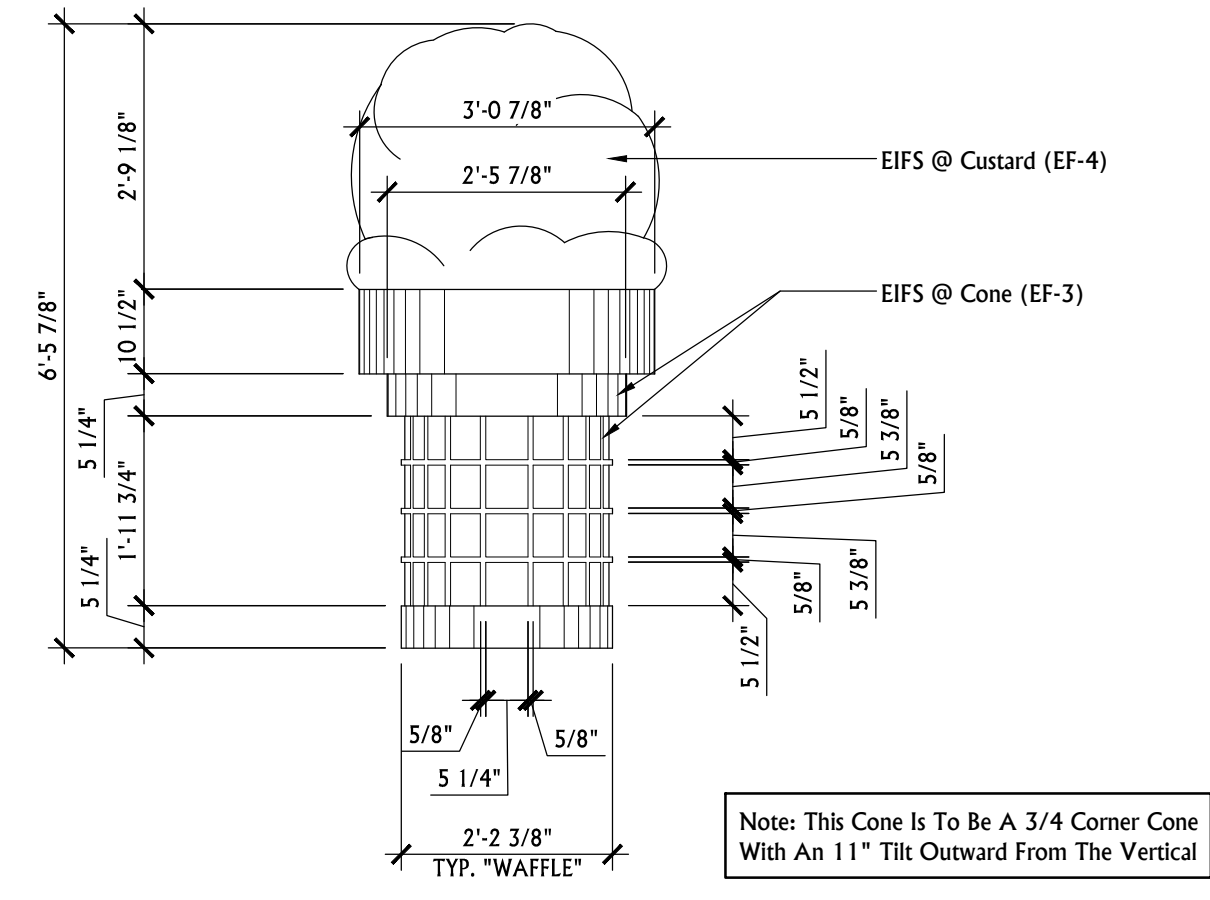
Revisions:



**1 SOUTH ELEVATION**  
a3.1 SCALE: 3/16" = 1'-0"



**2 WEST ELEVATION**  
a3.1 SCALE: 3/16" = 1'-0"



**3 EIFS CONE ELEVATION**  
a3.1 SCALE: 1/2" = 1'-0"

**GENERAL EIFS NOTES**

- EIFS Paint Color & Finish Shall Be Per Exterior Finish Material Legend - Ref. a3.1.
- Insulation Thickness Per Wall Sections & Plan Details - Ref. a4.1-a4.4 & a2.2.
- Provide Class PB System.

**GENERAL STOREFRONT NOTES**

- Storefront Framing System Shall Be Kawneer Trifab 451T, Clear Anodized Finish Or Equal
- Storefront Glazing Shall Be 1" Insulated, Clear, Low-E, Tempered Glass Ref. a-6.1 For Min. Tempered Glazing Locations.
- Storefront Doors Shall Be Wide Slit w/ 10" High Bottom Rail.
- Storefront Door Hardware Shall Be As Indicated On Door Hardware Schedule - Ref. a-6.1.

**EXTERIOR FINISH MATERIAL LEGEND**

KEY	ITEM	MANUFACTURER & PRODUCT INFORMATION	COLOR	REMARKS
WC-1	WOOD CLADDING	NICHIHA VINTAGE WOOD CLADDING EPC763F	BARK	--
BC-1	BLOCK CLADDING	NICHIHA ARCHITECTURAL BLOCK CLADDING ED6823	TUSCAN	--
EF-1	EIFS	STO - FINE TEXTURE	CUSTOM	COLOR TO MATCH SW7533 KHAKI SHADE
EF-2	EIFS	STO - FINE TEXTURE	CUSTOM	COLOR TO MATCH SW6126 NAVAJO WHITE
EF-3	EIFS	STO - FINE TEXTURE	CUSTOM	COLOR TO MATCH SW1110 TAWNEY BISQUE
EF-4	EIFS	STO - FINE TEXTURE	CUSTOM	COLOR TO MATCH SW2015 WHISPER WHITE
MC-1	METAL COPING	METAL ROOFING SYSTEMS, INC.	MATTE BLACK	--
MC-2	METAL COPING	DUROLAST	REGAL RED	2 PC COPING COMPRESSION CAP
MC-3	METAL COPING	METAL ROOFING SYSTEMS, INC.	PREFINISHED	PREFINISHED COLOR TO MATCH EP-1
STFR-1	ALUMINUM STOREFRONT	KAWNEER	CLEAR ANODIZED	--
C-1	METAL CANOPY	MAPES OR EQUAL	BLACK	PREMANUFACTURED
D&G-1	DOWNSPOUT & GUTTER	METAL ROOFING SYSTEMS, INC., KYNAR FINISH	PREFINISHED	PREFINISHED COLOR TO MATCH EP-1
EP-1	EXTERIOR PAINT	SHERWIN-WILLIAMS	CUSTOM	CUSTOM COLOR TO MATCH (BC-1) NICHIHA ARCHITECTURAL BLOCK CLADDING ED6823
EP-2	EXTERIOR PAINT	SHERWIN-WILLIAMS	SW7533 KHAKI SHADE	COLOR TO MATCH (EF-1)
CMU-1	SMOOTH FACE CMU	--	PAINTED	--
STN-1	ROCKCAST	READING ROCK - SINGLE CHAMFERED TEXTURE	BUFFSTONE - GPA	--
R-1	RAINHOOD	--	EP-1	PAINTED COLOR TO MATCH EP-1

**EXTERIOR BUILDING ELEVATION NOTES**

- REFER TO STRUCTURAL DRAWINGS FOR FOOTING ELEVATIONS.
- FINISHED GRADE SHOWN SCHEMATICALLY. REFERENCE CIVIL DRAWINGS FOR FINAL GRADING DETAILS.
- LAY MASONRY WITH TRUE LINE OF EXTERIOR FACE.
- REFERENCE WALL SECTIONS FOR ADDITIONAL INFORMATION.
- ALL SHEET METAL NOT LISTED IN LEGEND TO BE GALVANIZED PAINT-GRIP FINISH. PAINT TO MATCH ADJACENT SURFACE.
- ALL SHEET METAL TO CONFORM WITH SMACNA STANDARDS.
- PROVIDE APPROPRIATE PAINT TYPE FOR EACH MATERIAL TO BE PAINTED.
- SOFFIT COLOR TO MATCH ADJACENT VERTICAL SURFACE.
- PROVIDE R.T. PLYWOOD SHEATHING BEHIND EIFS FOR TENANT SIGNAGE/ RACEWAY ATTACHMENT. TYPICAL @ ALL MODULES. REFERENCE WALL SECTIONS FOR EXACT LOCATIONS.
- REFERENCE ELECTRICAL DRAWINGS FOR LIGHT FIXTURE SPECIFICATIONS.
- PROVIDE CONSTRUCTION JOINTS IN MASONRY BASED ON STRUCTURAL DWG REQUIREMENTS.
- MAPES ARCHITECTURAL CANOPIES (OR EQUAL) - SUPER LUMIDECK HANGER ROD CANOPY WITH FLAT SOFFIT. PROVIDE 4" FASCIA EXTENSION. COORDINATE HANGER ROD LOCATIONS w/ CANOPY MANUFACTURER REQUIREMENTS.

A New Retail Facility:  
**Creswell Landing**  
7616 Chapman Highway  
Knoxville, TN 37920

Sheet No.

**a3.1**