



Lease Space Available

Chapman Ford Crossing

6522 Chapman Highway
Knoxville, TN 37920



Contacts:

Ryan Matthews

(865) 320-0649

ryan@greenbrier-rea.com

Caleb Glafenhein

(865) 356-5526

caleb@greenbrier-rea.com



Greenbrier Real Estate Advisors
419 N Forest Park Boulevard, Ste B

Knoxville, TN 37919

www.greenbrier-rea.com

Property Details

Name	Lease Space Available - Chapman Ford Crossing
Address	6522 Chapman Highway Knoxville, TN 37920
Available Lease Space	Unit 4: 3,170 +/- SF Unit 5: 2,400 +/- SF Unit 8: 25,200 +/- SF Unit 12 -13 3,200 SF Unit 15: 4,400 +/- SF Unit 17a: 49,866 +/- SF
Lease Price	**See Agent

Market Overview

- Property located on Chapman Highway in growing South Knoxville market
- Traffic light intersection allows for easy in and out access
- Current tenants include: Gold's Gym, Dollar General, Panasonic, European Bakery, Cabinetz & Topz, etc...
- High growth area with traffic counts of 28,609 ADT on Chapman Highway
- Excellent parking opportunities

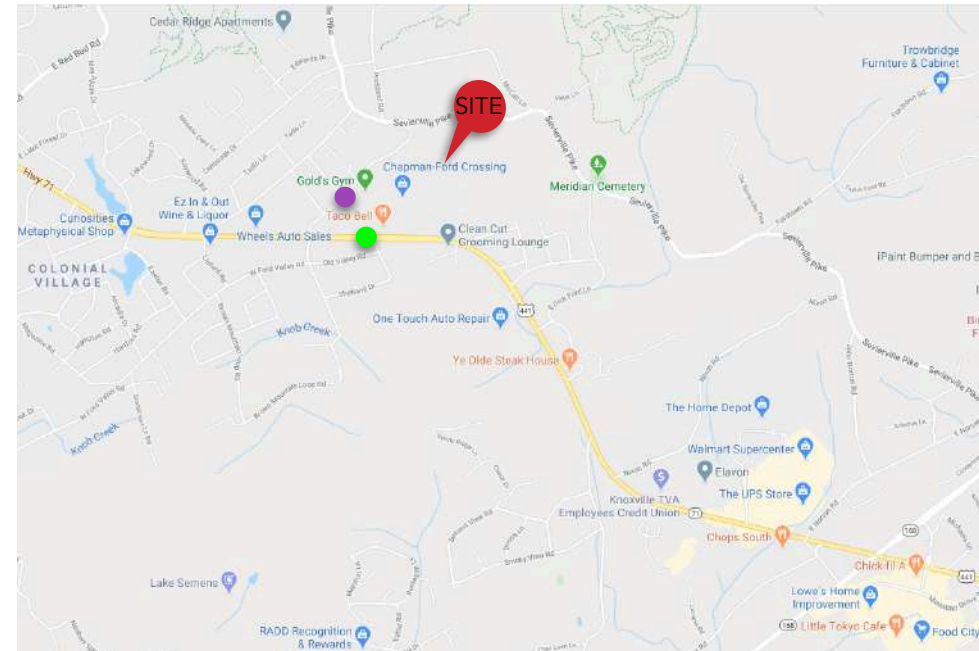
Demographic Snapshot

	1 Mile	3 Mile	5 Mile
Population	2,685	22,931	75,779
Average Household Income	\$81,954	\$71,533	\$64,602

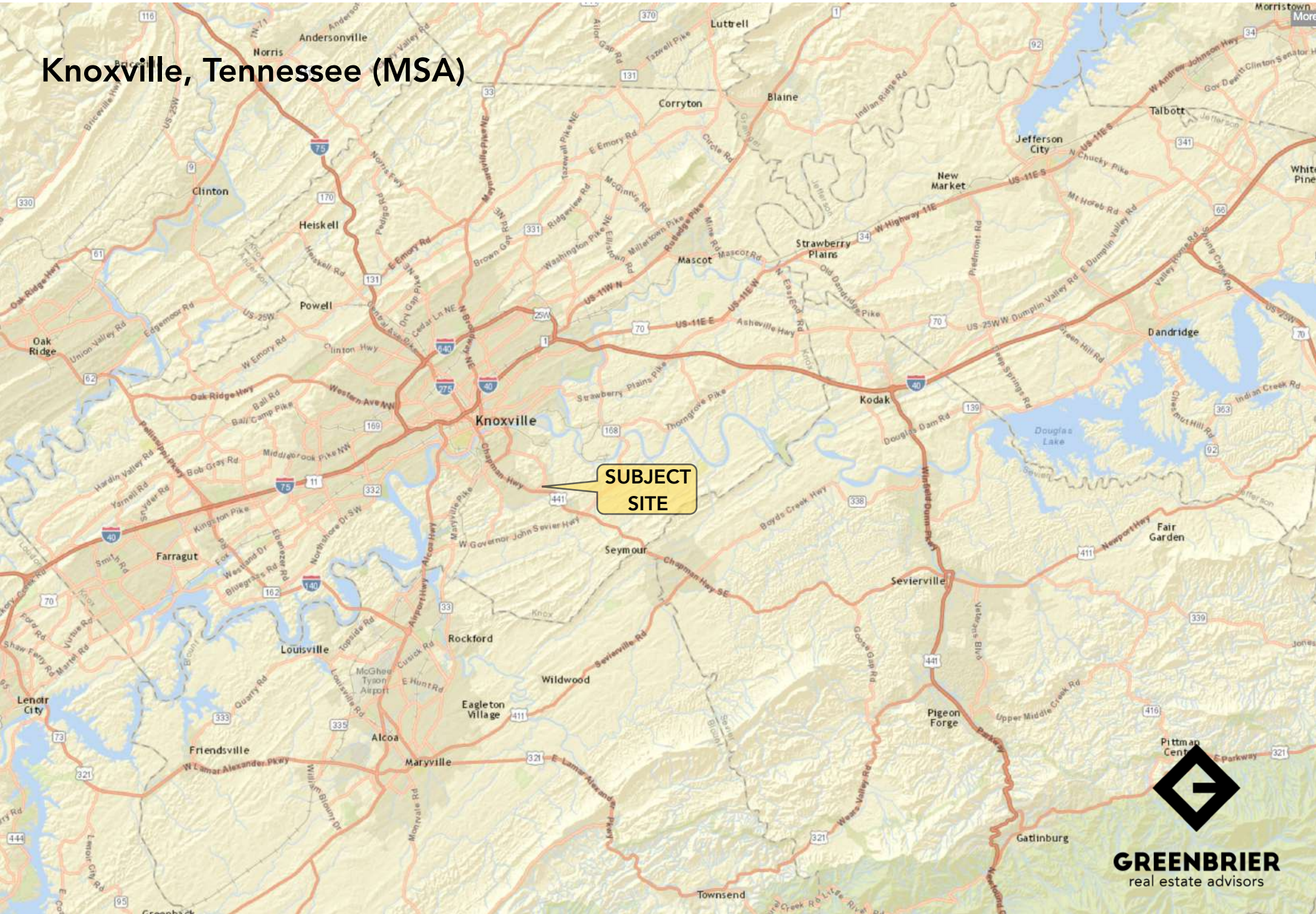
Traffic Counts *2023 Data

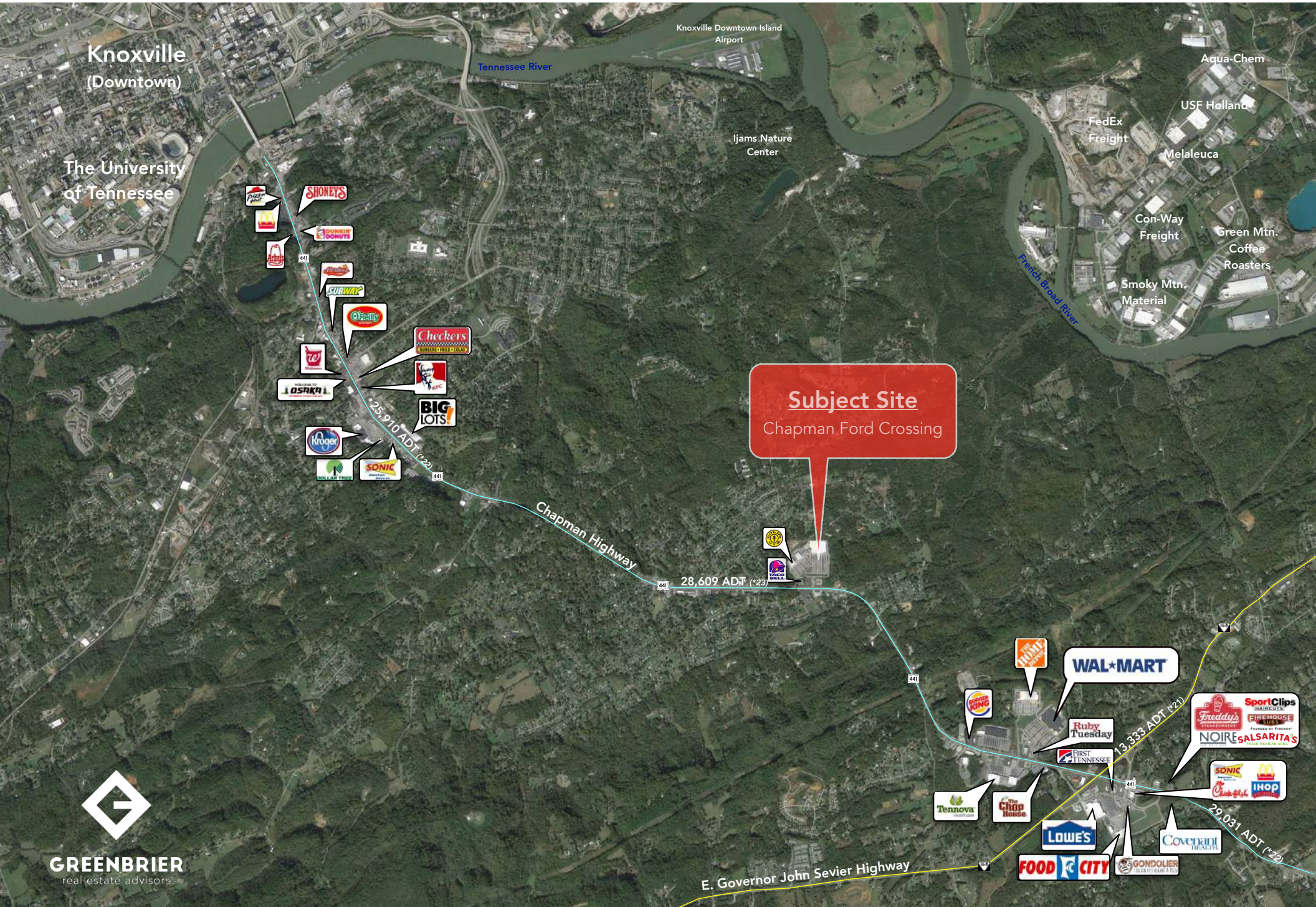
Chapman Highway	28,609 ADT	●
E Ford Valley Road	Unavailable	●

Map



Knoxville, Tennessee (MSA)







Available
(49,866 SF)

Panasonic

FIRST TENNESSEE

Available
(4,400 SF)

DOLLAR GENERAL

Available
(3,200 SF)

E-Commerce

Cabinetz & Topz

Petty's Pub

Subject Site
Chapman Ford Crossing

GOLD'S GYM

Available
(25,200 SF)

Dental Office

Available
(2,400 SF)

European Bakery

Available
(3,170 SF)

jiffylube

TACO BELL

28,609 ADT (*23)

Chapman Highway

Chapman Ford Crossing



STE #	TENANT	SQ FT
1	European Bakery	1,600
2	Pure Dental Brands	3,200
3	Gold's Gym	31,762
4	Available	3,200
5	Available	2,400
6-7	Cabinetz & Topz	2,916
8	Available	25,200
9-11	Dollar General	11,200
12-13	Available	3,200
14	E-commerce	1,600
15	Available	4,400
16	Petty's Pub	2,800
17	Panasonic Industrial Devices	21,117
17A	Available	49,866
17B	First Tennessee Bank N.A.	60,000



6522 Chapman Hwy, Knoxville, Tennessee, 37920

1 mile

3 miles

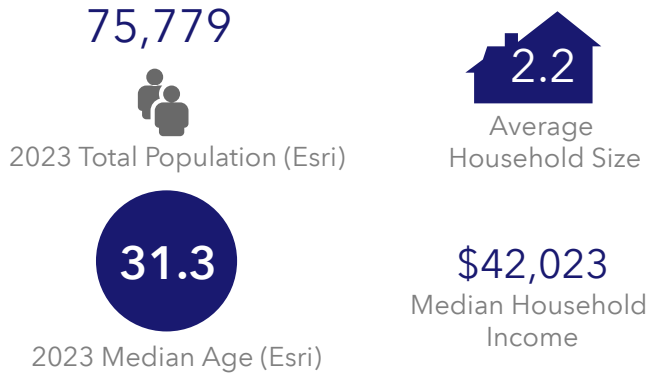
5 miles

2023 Average Household Income by Counties

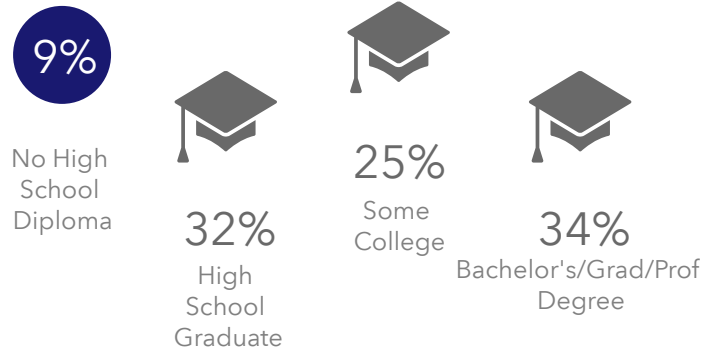
Dark Blue	\$138,550 to \$218,821
Medium Blue	\$105,116 to \$138,549
Light Blue	\$84,949 to \$105,115
Very Light Blue	\$69,583 to \$84,948
White	\$38,158 to \$69,582

(5 Mile Radius)

KEY FACTS

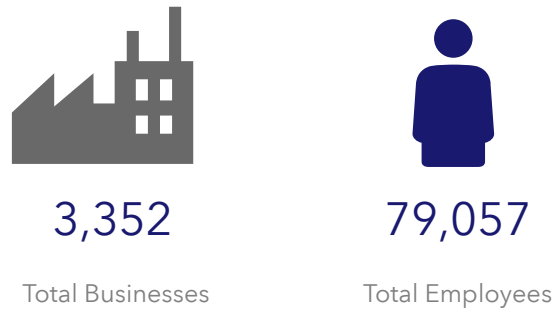


EDUCATION

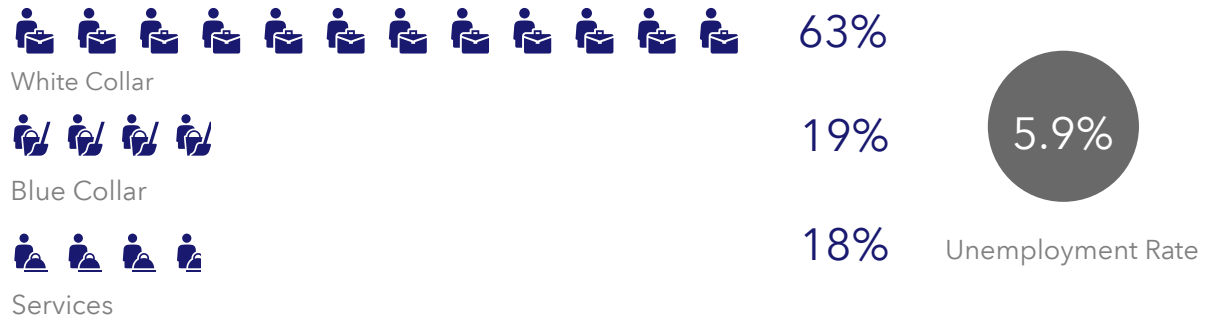


2023 Daytime Population	
2023 Total Daytime Population	118,279
2023 Daytime Population: Workers	76,843
2023 Daytime Population: Residents	41,436

BUSINESS



EMPLOYMENT



6522 Chapman Hwy, Knoxville, Tennessee, 37920

Average Household Income



\$64,602

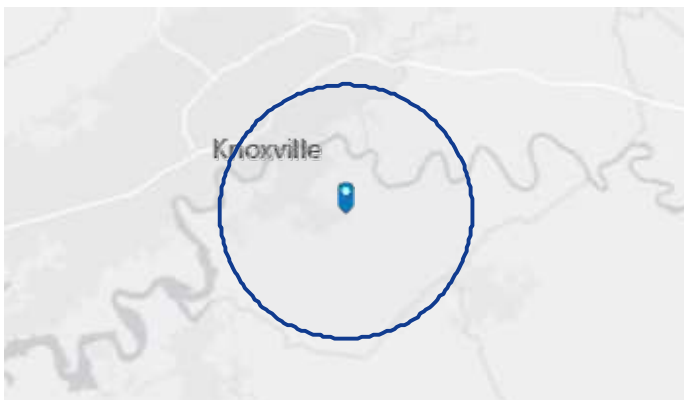
2023 Average Household Income

Total Retail Sales



\$8,725,046,634

2023 Total (SIC01-99) Sales (\$000)



MARKET ECONOMIC INFORMATION (*2023)

POPULATION FIGURES

Knoxville, TN DMA	1,443,661
Ranked 62nd out of 210 DMA markets in U.S.	
Knoxville, TN MSA	903,964
City of Knoxville Population	195,343
Knox County Population	494,293

TOP EMPLOYERS

Company	Employees
1. U.S. Department of Energy – Oak Ridge	16,175
2. Covenant Health	11,913
3. Knox County Schools	10,047
4. University of Tennessee	9,299
5. Wal-Mart Stores	6,863
6. University Health Systems	5,387
7. Clayton Homes	5,047
8. Denso Manufacturing	5,000
9. Dollywood	4,500
10. K-VA-T Food Stores (Food City)	4,302
11. Roark Capital Group	3,873
12. State of Tennessee	3,122
13. Sevier County Schools	3,000
14. Knoxville County Government	2,941
15. Tennova Healthcare	2,927
16. Blount Memorial Hospital	2,688

MSA SECTOR BREAKDOWN ON EMPLOYMENT

Industry (by SIC Codes *2023)	Employees
Construction	19,424
Finance, Insurance, Real Estate	24,705
Government	20,377
Manufacturing	34,819
Services	194,269
Wholesale Trade	18,711
Retail Trade	89,129
Transportation, Communications, & Public Utilities	15,804

UNIVERSITIES & COLLEGES

Institution	Enrollment
The University of Tennessee	36,304
Pellissippi State Community College	8,710
Roane State Comm. College (Harriman)	4,457
Walters State Community College	5,379
Tusculum University (Greenville)	1,111
Carson Newman	2,735
Bryan College (Dayton)	1,587
Maryville College	1,147
Tennessee Wesleyan College	1,052
South College	4,175

AREA HOSPITALS

Hospital	# of Beds
University of Tennessee Medical Center	710
Fort Sanders Regional Medical Center	541
Parkwest Medical Center	492
Blount Memorial Hospital	304
Methodist Medical Center of Oak Ridge	283
Tennova Healthcare – North Knoxville	219
East Tennessee Children's Hospital	152
Turkey Creek Medical Center	107

KNOXVILLE, TENNESSEE [MARKET TRADE AREA PROFILE]

LEGEND:

- PRIMARY TRADE AREA
- SECONDARY TRADE AREA
- TERTIARY TRADE AREA

Trade area boundaries are approximate in concept and intended for general reference

